



17 Ashwell Close, Bristol, BS14 8LG

£325,000

This three-bedroom end of terrace house is ****for sale**** in a popular residential area of Bristol, well placed for local amenities, green spaces and public transport links.

The ground floor accommodation includes an entrance hallway with downstairs WC, a separate reception room, and an open-plan kitchen with kitchen island. The kitchen opens through to a dwarf-wall conservatory, creating a versatile day-to-day living and dining space with views towards the garden. There are multiple storage cupboards and a separate utility room, providing practical space for appliances and household items.

On the first floor, there are three generous bedrooms, two of which are doubles. The family bathroom includes a free-standing bath and a separate shower. The property has an EPC rating of C and falls within Council Tax band B.

Entrance Hall



Sitting Room

13'3" x 11'8" (4.05 x 3.57)



Kitchen

13'3" x 11'4" (4.05 x 3.46)



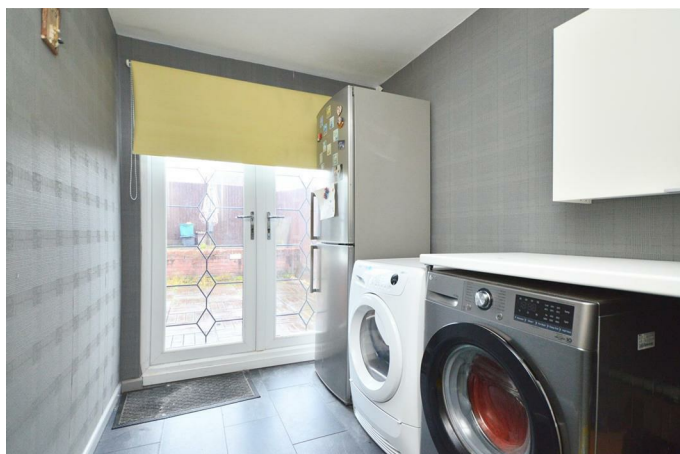
Conservatory

13'3" x 11'5" (4.05 x 3.50)

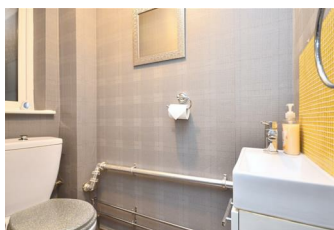


Utility

8'0" x 6'0" (2.46 x 1.84)



Downstairs WC



First Floor Landing

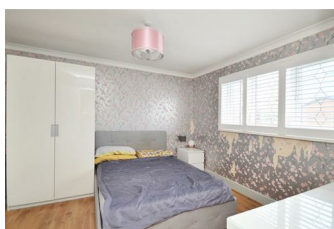
Bedroom One

13'4" x 12'0" (4.07 x 3.68)



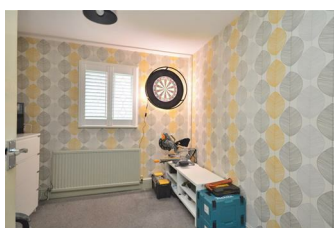
Bedroom Two

11'3" x 10'9" (3.44 x 3.29)



Bedroom Three

9'3" x 8'11" (2.82 x 2.73)



Bathroom

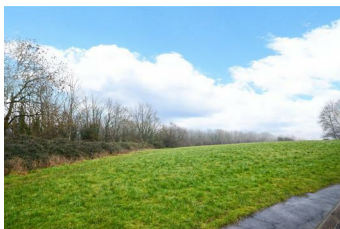
8'5" x 5'6" (2.59 x 1.68)



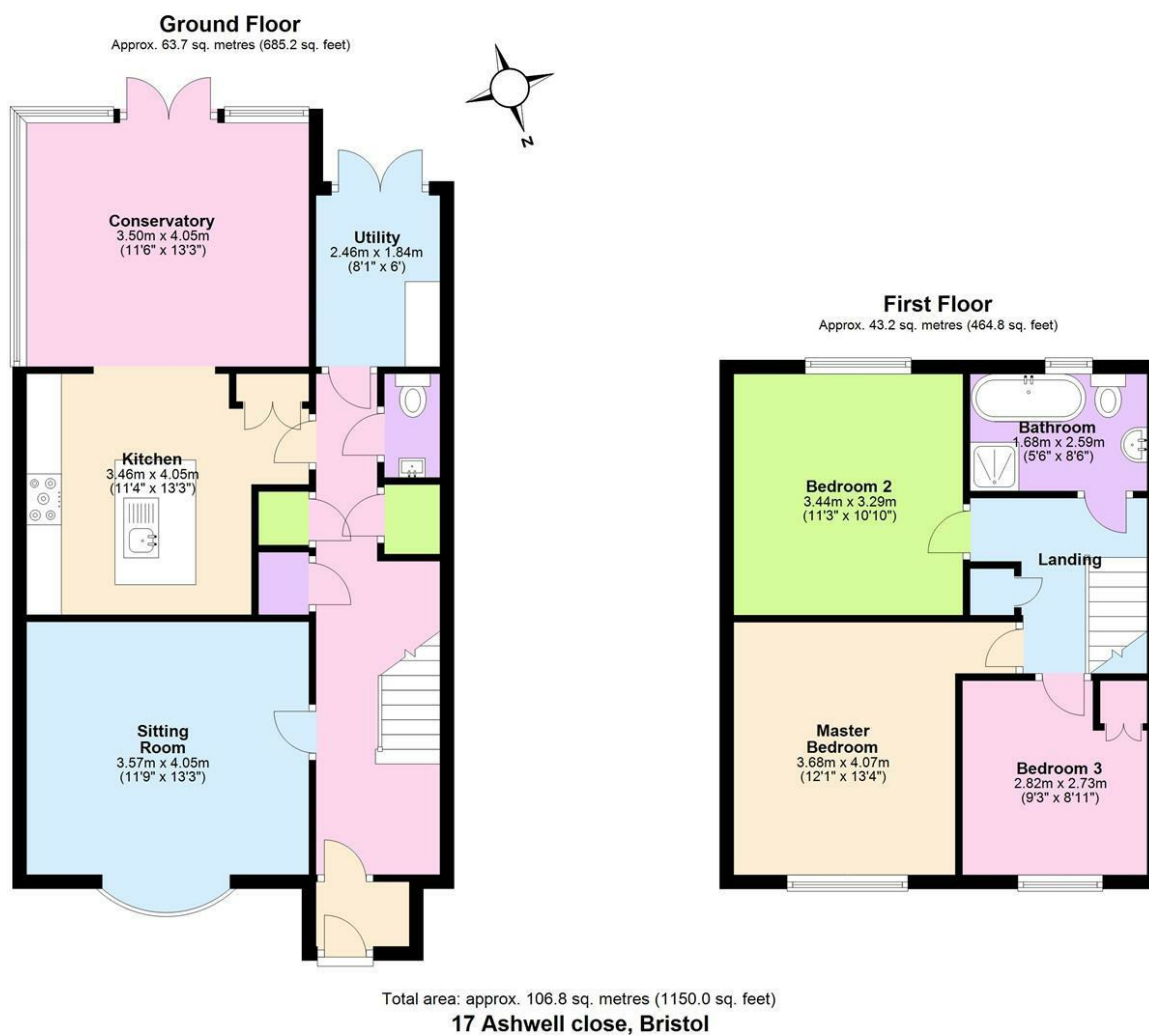
Outside



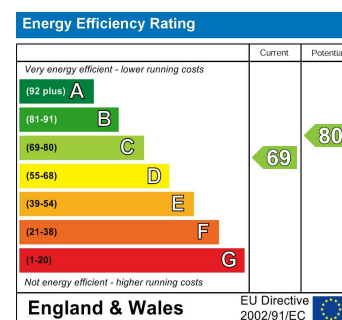
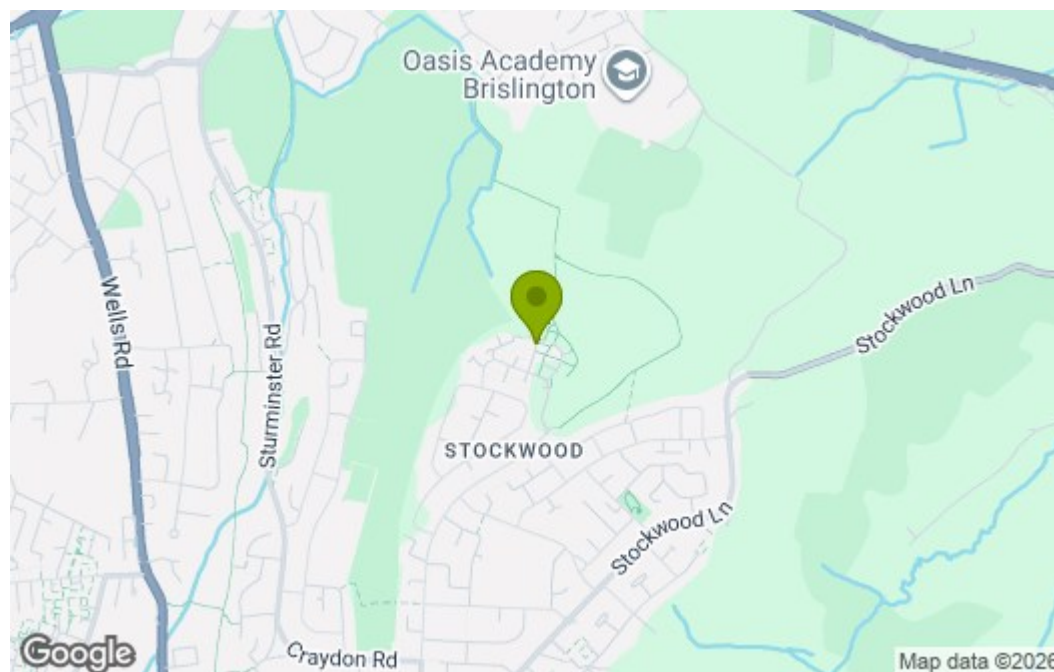
Views to the Front



Floor Plan



Area Map



These particulars, whilst believed to be accurate are set out as a general outline only for guidance and do not constitute any part of an offer or contract. Intending purchasers should not rely on them as statements of representation of fact, but must satisfy themselves by inspection or otherwise as to their accuracy. No person in this firm's employment has the authority to make or give any representation or warranty in respect of the property.